



// Unified Endpoint Management

## **How to manage & secure your endpoints from one central place**



**RAYMANAGESOFT<sup>®</sup>**

Discover to Manage



# RAYMANAGESOFTi®

## Comprehensive Endpoint Management

### The new generation of Application Lifecycle Management

IT administrators today face many challenges in their desktop and security management tasks.

One of them is the deployment of software applications to their end users.

At the same time, companies or similar organizations have an ever-increasing number of clients, servers or VDIs and have users who, own more than one device, work remotely or are constantly on the move.

However, users want to be able to access their applications anywhere and anytime, whether mobile devices, Virtual Desktop Infrastructure (VDI) or, for example, with the Bring Your Own Device strategy (BYOD). Simultaneously, companies are expected to properly ensure a controlled and secured approach in desktop management. Due to this conflict of interests and the growing number of software applications as well as ever shorter update intervals, the requirements for an even more powerful patch management are increasing.



Central access point  
for unified Endpoint  
Management

In general, IT departments are also being asked to deliver more performance on lower budgets without compromising the productivity of their users.

RayManageSofti overcomes these administrative challenges with a unified software deployment system for operating systems, application software and patch management across a variety of hardware platforms and operating system types. As a result, the Endpoint Management solution helps customers reduce costs by deploying and managing servers and clients from a central location.

RayManageSofti also helps to increase the end user productivity and IT efficiency through an automated and repeatable deployment process.

#### **Reduces administrative overheads and support costs**

- Automatic deployment of operating systems and application software
- Setting up a process for the patch management of various software products
- Controlled rollout activities for application software (Rollout Control)
- Grouping of application software into logical bundles (Package Bundles)

#### **Improves end-user productivity**

- Reduction of downtime
- Securing the permanent and location-independent access to the required applications
- Fast system recovery through defined application software according to customer specifications (Desired State)

## Central Software Deployment

### Deployment Management

- The integrated Deployment Manager ensures the central and automatic software deployment to decentralized clients, servers and VDI
- By means of various functions for mass processing and automation of software updates, a permanently monitored provisioning and installation process of Windows and non-Windows applications is guaranteed
- Implementation of installation and deinstallation orders controlled by the ordering system

## OS Deployment and automatic installation

### OS Deployment Management

- OS Deployment Manager automates the process of deploying and installing Microsoft Windows 10 and Windows Server 2019 operating systems as well as earlier versions on devices throughout the IT domain
- Once a client has gone through the process of initial installation of the operating system, it is equipped with basic requirements such as drivers and basic software packages
- With the OS Deployment Manager, every newly installed client will be easily and automatically integrated into the Application Lifecycle Management by the Deployment Manager and the Security Manager
- The software agent for deployment supports several operating systems in various versions, such as Windows, macOS and Linux/UNIX

## Security with up-to-date patches

### Security Patch Management

- Proactive Patch Management: Monitoring of the patch releases and uncomplicated deployment of the security updates from Microsoft and Third-Party products, such as Adobe products, Google Chrome and many more
- Automatic notification and alerts for new patches
- Vulnerability analysis and reporting based on this information

## Entire overview of the IT infrastructure

### Hardware and Software Inventory

- Discovery and adoption: Gathers hardware information from clients and other devices on the network
- Various scan technologies for highest data quality: agent-based and agentless (portable, remote, zero touch)
- A portable application for centralized and decentralized scanning and recording of all data in the IT landscape, specialized in the scanning of operating systems, Oracle databases, VMware vSphere/ESX and SNMP
- Enormous relief for the administration through individual Planning and automated execution of scans

## Reliable reports for a comprehensive overview

### Reporting Engine

- Central reporting is organized by geographically dispersed locations and by distribution status, providing reliable information across the entire network with many drill-down capabilities
- Monitoring of installation status and proactive license control
- Best possible and always up-to-date transparency over the entire IT infrastructure with detailed overviews of hardware, device status, software inventory, SNMP devices, VMware infrastructures and Oracle servers

## Automated administration of data and IT assets

### Asset and Identity Management

- Adding individual assets which can be linked to existing objects in a useful way
- Workstations, notebooks, servers, monitors, printers, telephones, tablets, webcams, routers as well as tables and chairs can be recorded and managed in asset management with various properties
- Increased security through automation of account and permission management

## Increases corporate compliance and device control

- Configuration of standard servers and desktop images
- Easy management of locked-down environments
- Proactive license monitoring through the use of license counters

## Transparency over the entire IT infrastructure

- Detection of all devices in the entire network
- Quick overview through intelligent report engine
- Identification of any software by software recognition function



## Complete integration of finished software packages

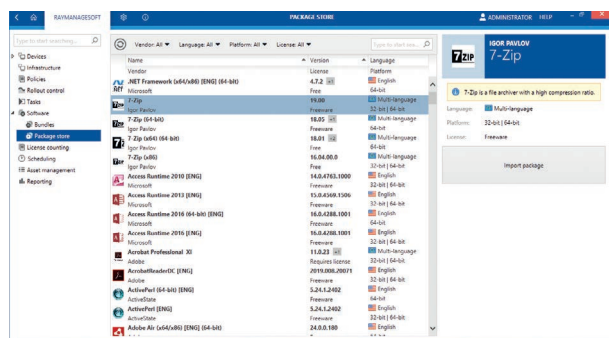
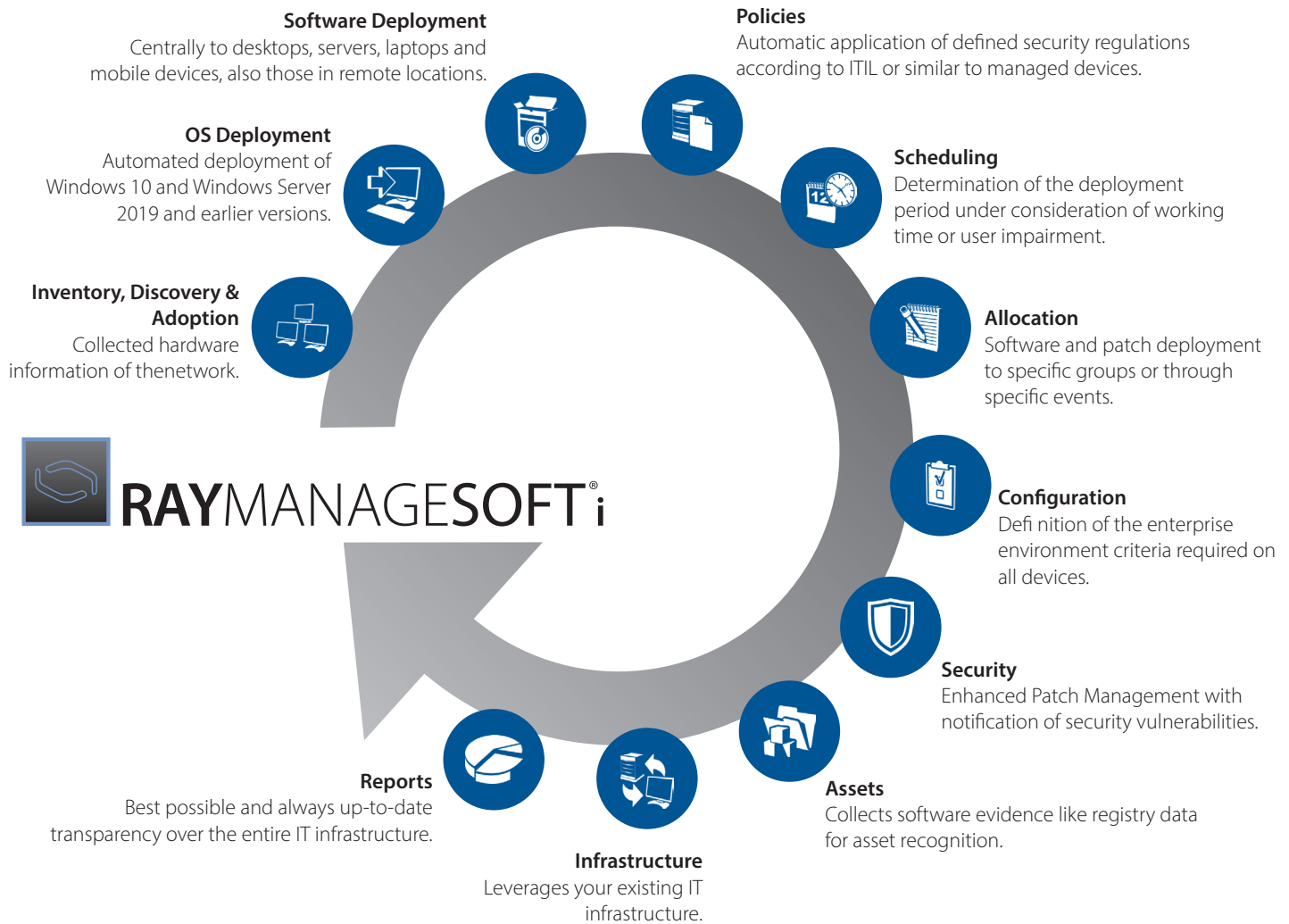
### Package Store

- Distributable software packages: Analyzed, preconfigured, quality-assured and tested for Windows 10
- Integrated editor for easy package customization
- Direct access to over 300 immediately available software packages – constantly growing
- Email information about new version availability

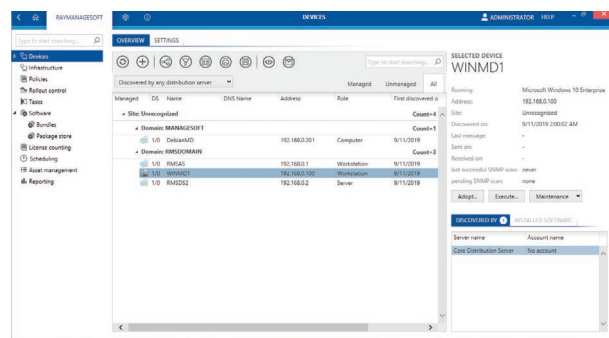
## All licenses at a glance

### License Counting

- A quick and easy way for controlling the number of licenses (on user-, device-, processor- or core basis) and counting all managed and unmanaged software installations
- Basis for ensuring license compliance to survive future audits unscathed
- The determined data serves as a basis for license optimization



Integration Package Store



All devices at a glance



# RAYMANAGESOFT®





## Why Raynet

As a global software vendor with market-leading solutions and complementary managed services, we make successful end-to-end management of IT projects and operations possible.

Following the mission **“Discover to Manage”**, our vision is that all companies worldwide achieve transparency and security as well as optimization of their IT investments by using our technologies..

## Get in touch

For more information, call our sales team at **+49 5251/54009-0** or write to **[sales@raynet.de](mailto:sales@raynet.de)**.

