



// Release Notes 3.0

RayManageSoft Unified Endpoint Manager



RAYMANAGESOFT® UNIFIED ENDPOINT
MANAGER



**Copyright © Raynet GmbH (Germany, Paderborn HRB 3524). All rights reserved.
Complete or partial reproduction, adaptation, or translation without prior written permission
is prohibited.**

Release Notes for release 3.0

Raynet and RayFlow are trademarks or registered trademarks of Raynet GmbH protected by patents in European Union, USA and Australia, other patents pending. Other company names and product names are trademarks of their respective owners and are used to their credit.

The content of this document is furnished for informational use only, is subject to change without notice, and should not be construed as a commitment by Raynet GmbH. Raynet GmbH assumes no responsibility or liability for any errors or inaccuracies that may appear in this document. All names and data used in examples are fictitious unless otherwise noted.

Any type of software or data file can be packaged for software management using packaging tools from Raynet or those publicly purchasable in the market. The resulting package is referred to as a Raynet package. Copyright for any third party software and/or data described in a Raynet package remains the property of the relevant software vendor and/or developer. Raynet GmbH does not accept any liability arising from the distribution and/or use of third party software and/or data described in Raynet packages. Please refer to your Raynet license agreement for complete warranty and liability information.

Raynet GmbH Germany
See our website for locations.

www.raynet.de

Contents

| | |
|--|----|
| Introduction | 4 |
| System Requirements | 4 |
| Supported OS | 5 |
| What's New? | 6 |
| Other Improvements and Changes | 13 |
| Resolved Issues | 14 |
| Migrating from Previous Versions | 15 |
| Known Issues | 16 |
| Additional Information | 17 |

Introduction

RayManageSoft Unified Endpoint Manager provides a cloud-based solution for software deployment as well as patch management and an overview over the entire IT infrastructure.

It is possible to automate the management and software deployment for huge parts of the infrastructure while at the same time, keep individual schedules and lists of optional and mandatory software for specific endpoints.

RayManageSoft Unified Endpoint Manager can manage a multi-tenant environment, which means that it can manage multiple tenants or multiple infrastructure environments which can be hosted by different storage hosters. Currently Microsoft Azure, Amazon S3, and MinIO are the storage hoster which are supported by RayManageSoft Unified Endpoint Manager.

System Requirements

RayManageSoft Unified Endpoint Manager requires a cloud storage to store all uploaded package files and to make them available to all devices. In this version cloud storage backed by Azure infrastructure, Amazon Web Services, and MinIO is supported.

Prerequisites

- Docker Images for RayManageSoft Unified Endpoint Manager.
- Docker for Linux (on-premise installation)
- Microsoft SQL Server
 - The server must be reachable from the Docker environment.
- A cloud storage solution (Azure, MinIO, Amazon Web Services)
- A valid RayManageSoft Unified Endpoint Manager license, either in form of an order number or in form of a license file.

**Note:**

RayManageSoft Unified Endpoint Manager uses linux docker images. Make sure that Docker has been switched to **Linux Containers** mode. It is not possible to pull the images when running **Windows Containers**.

Supported Web Browsers

- Microsoft Edge version 80 and newer
- Mozilla Firefox version 74 and newer
- Google Chrome version 80 and newer



Supported OS

The following OS can be managed using RayManageSoft Unified Endpoint Manager.

- [Windows Desktop](#)
- [Windows Server](#)
- [MacOS](#)

Windows Desktop

- Windows 7
- Windows 8
- Windows 8.1
- Windows 10
- Windows 11

Windows Server

- Windows Server 2008 R2
- Windows Server 2012
- Windows Server 2012 R2
- Windows Server 2019
- Windows Server 2022

MacOS

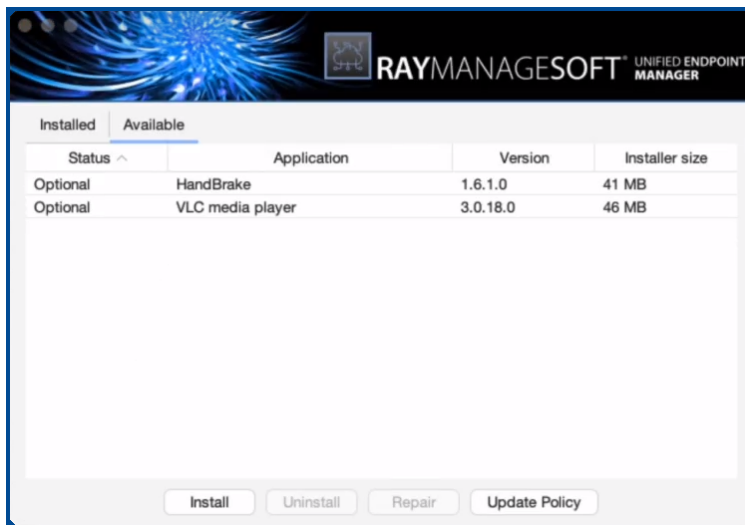
- Apple Mac OS 10.12
- Apple Mac OS 10.13
- Apple Mac OS 10.14
- Apple Mac OS 10.15
- Apple Mac OS 11
- Apple Mac OS 12
- Apple Mac OS 13



What's New?

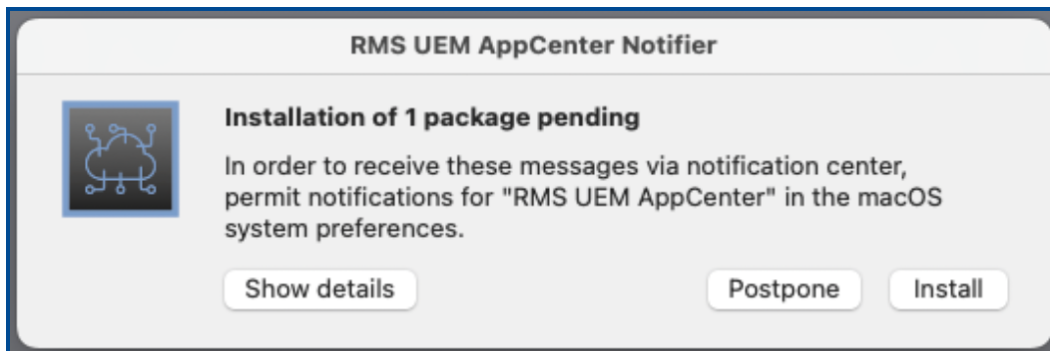
AppCenter for Windows and macOS [RMSC-1723](#) [RMSC-1848](#) [RMSC-1753](#) [RMSC-1785](#) [RMSC-1820](#)

The RMS UEM AppCenter for macOS has been implemented in this release. It provides an overview of the installed and available packages. Additionally, the AppCenter contains a simple management, so that the user can repair or uninstall the packages (as long as the policies allow it).



AppCenter running on macOS

Both Windows and macOS have now native support for user interaction for postponement. The administrator can set up packages, so that the actual installation can be pushed, until specific number of times or until a specific date. The user has an easy to understand prompt, which lets him pick up the desired action.



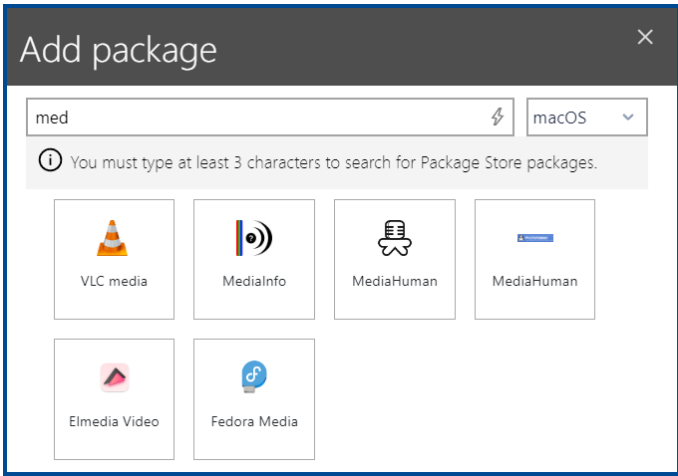
Postponement prompt running on macOS

 **Note:**

On Windows, the AppCenter replaces the previously available Selector / Deployment Manager.

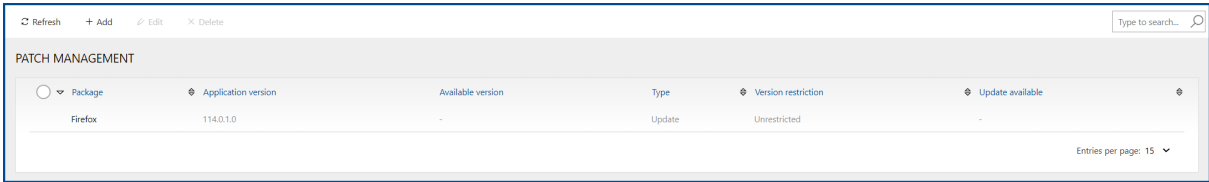
Automatic Creation of Packages and Patches for macOS RMSC-1726 RMSC-1728

The built-in integration of Package Store has been extended and now supports both Windows and macOS apps. Package Store is a quick way of preparing a ready-to-be-deployed app with common settings. The app is preconfigured and yet still allows flexibility and configuration options both general as well as app-specific.



Package Store package selection for macOS packages

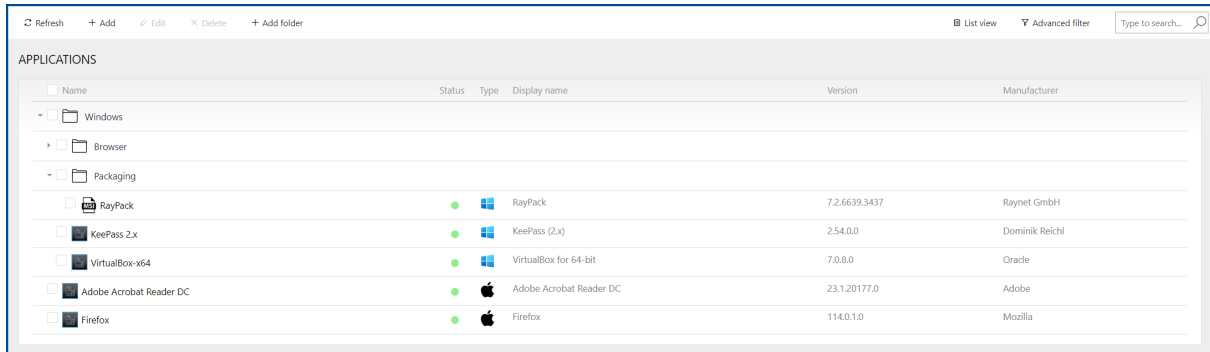
Similarly to the previously available patching ability for Windows patches, patching for macOS applications has been implemented. Package Store packages for macOS can be used as a source for automatic patching.



Patch Management page showing a macOS package

Applications Can Now Be Displayed in Tree-Like Structures RMSC-1647

The list of applications now has two alternate modes. Next to the previously available list mode (flat), the users are now able to create tree structures with multi-level nesting. This change makes it easier to manage package, move them between different states / rings / functional folders, and find the required entries without much effort.

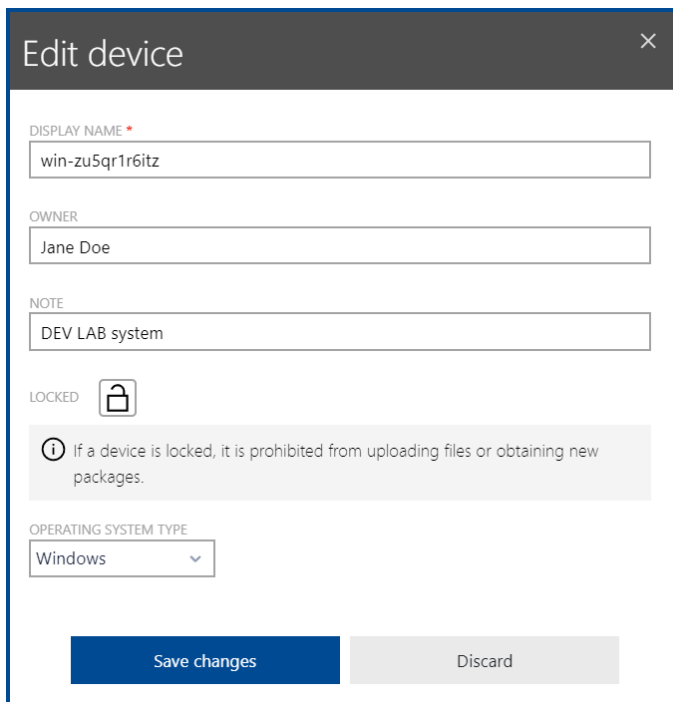


| Name | Status | Type | Display name | Version | Manufacturer |
|-------------------------|--------|---------|-------------------------|---------------|----------------|
| Windows | | | | | |
| Browser | | | | | |
| Packaging | | | | | |
| RayPack | ● | Windows | RayPack | 7.2.6639.3437 | Raynet GmbH |
| KeePass 2.x | ● | Windows | KeePass (2.x) | 2.54.0.0 | Dominik Reichl |
| VirtualBox-x64 | ● | Windows | VirtualBox for 64-bit | 7.0.8.0 | Oracle |
| Adobe Acrobat Reader DC | ● | macOS | Adobe Acrobat Reader DC | 23.1.20177.0 | Adobe |
| Firefox | ● | macOS | Firefox | 114.0.1.0 | Mozilla |

Applications page using the new Tree view

Tag Groups, Devices and Packages with Target Operating System RMSC-1854

Core elements for the organization of policies and assignments (groups, devices, and packages) now support an extra property that defines the desired operating system. This makes it easier to manage platform assignment when working with hybrid environments and with mixed Windows and macOS devices and apps.



Edit device ✕

DISPLAY NAME *
win-zu5qr1r6itz

OWNER
Jane Doe

NOTE
DEV LAB system

LOCKED

ⓘ If a device is locked, it is prohibited from uploading files or obtaining new packages.

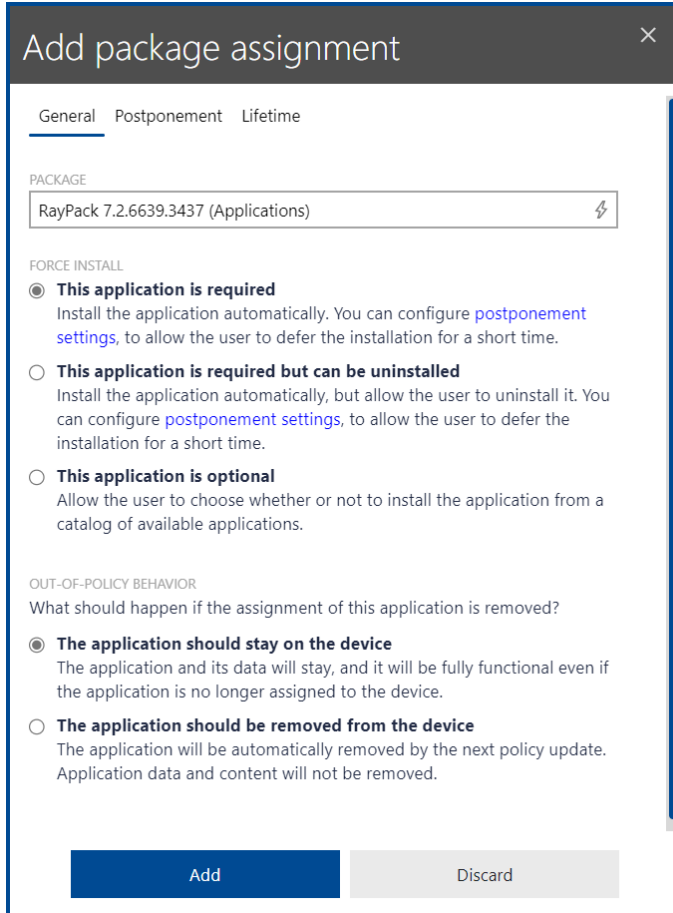
OPERATING SYSTEM TYPE
Windows

Save changes
Discard

Edit device dialogue

The Assignment Dialog Has Been Redesigned [RMSC-513](#) [RMSC-1550](#) [RMSC-1832](#)

The package assignment dialog has been redesigned. The **General** settings are now more descriptive and frequently used options have been pulled up to be displayed earlier.



The screenshot shows a dialog box titled "Add package assignment" with a close button (X) in the top right corner. It has three tabs: "General", "Postponement", and "Lifetime". The "General" tab is selected. Below the tabs, there is a "PACKAGE" section with a dropdown menu showing "RayPack 7.2.6639.3437 (Applications)" and a refresh icon. Below that is a "FORCE INSTALL" section with three radio button options: "This application is required" (selected), "This application is required but can be uninstalled", and "This application is optional". Below that is an "OUT-OF-POLICY BEHAVIOR" section with the question "What should happen if the assignment of this application is removed?" and two radio button options: "The application should stay on the device" (selected) and "The application should be removed from the device". At the bottom, there are two buttons: "Add" (blue) and "Discard" (grey).

Package Assignment dialogue - General tab

In the new **Postponement** tab it is possible to configure specific settings that will affect whether and for how long the end user is allowed to postpone the installation of an app.



Add package assignment

General **Postponement** Lifetime

POSTPONEMENT OF ASSIGNMENT

Postpone by days

The installation can be postponed for **5** days. (Starting from the day they are available on the managed device)

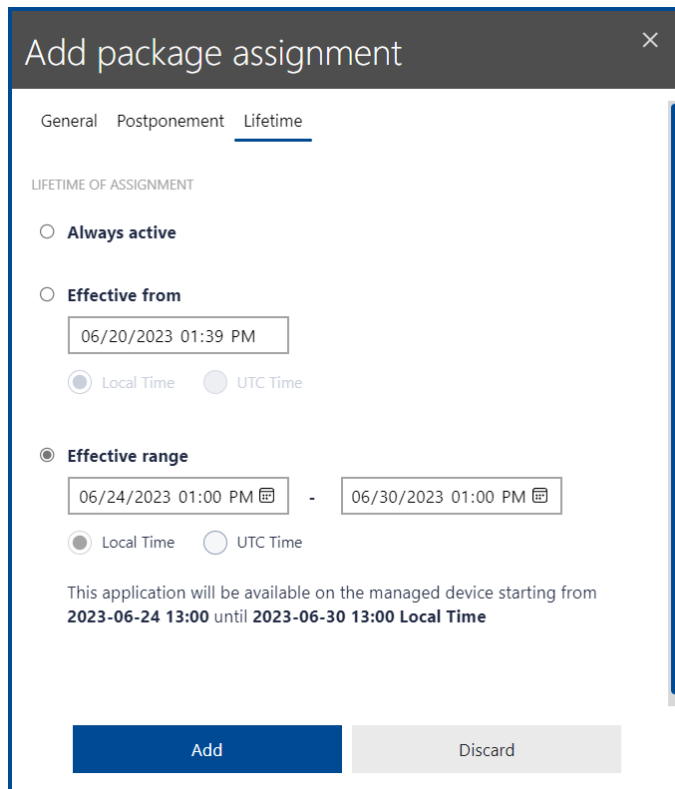
Postpone by date

Local Time UTC Time

The installation can be postponed until **2023-06-21 13:00 UTC Time**

Package Assignment dialogue - Postponement tab

In the new **Lifetime** tab it is possible to configure a specific timeframe in which the assignment is valid. This enables the setup of assignments for apps to groups or devices, that should only be used from and/or until a specific date.



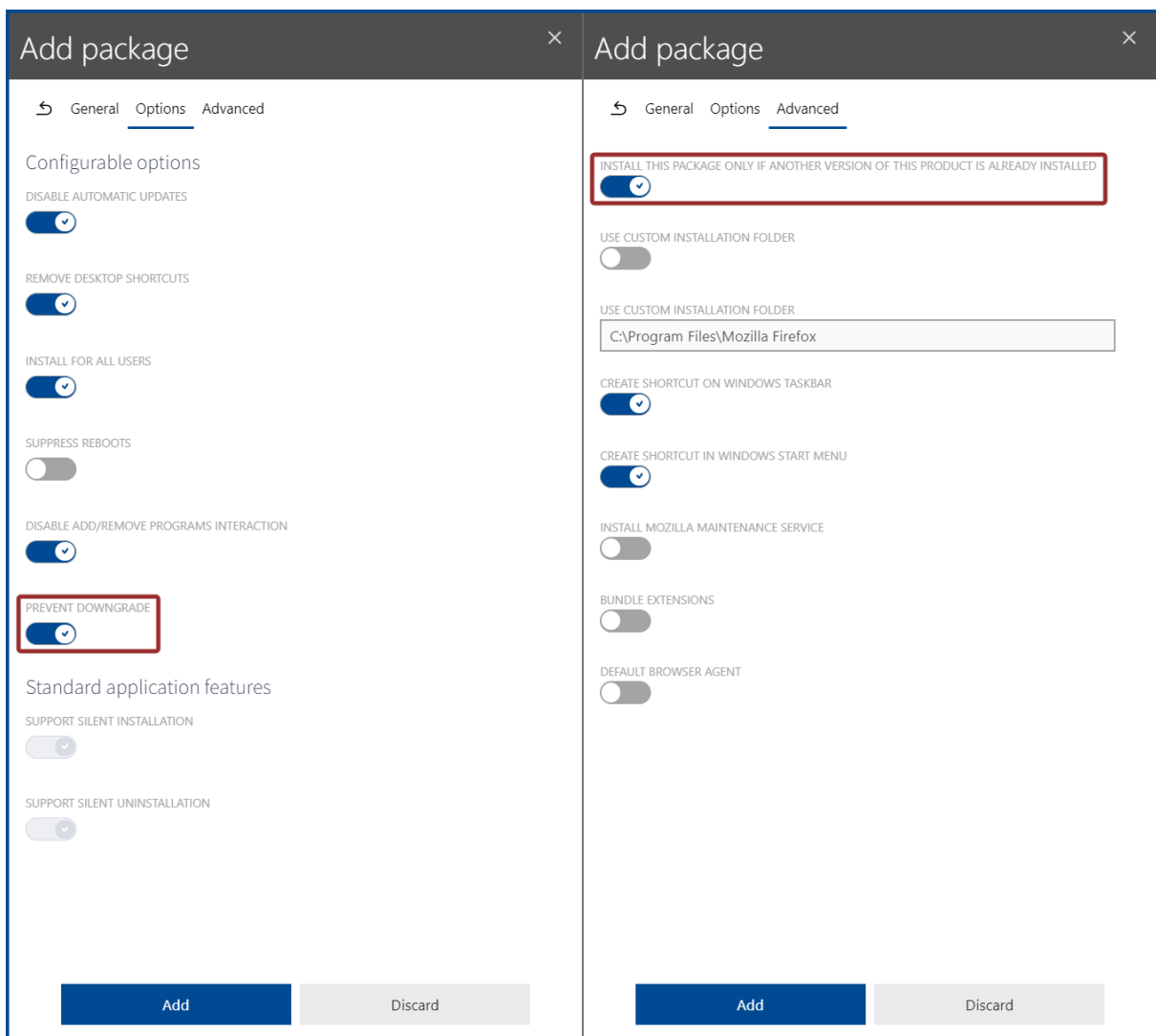
The screenshot shows a dialog box titled "Add package assignment" with a close button (X) in the top right corner. It has three tabs: "General", "Postponement", and "Lifetime", with "Lifetime" being the active tab. Under the heading "LIFETIME OF ASSIGNMENT", there are three radio button options: "Always active", "Effective from", and "Effective range". The "Effective range" option is selected. The "Effective from" option has a date and time input field showing "06/20/2023 01:39 PM" and two radio buttons for "Local Time" (selected) and "UTC Time". The "Effective range" option has two date and time input fields: the first shows "06/24/2023 01:00 PM" and the second shows "06/30/2023 01:00 PM", with a minus sign between them. Below these fields are two radio buttons for "Local Time" (selected) and "UTC Time". A summary line states: "This application will be available on the managed device starting from 2023-06-24 13:00 until 2023-06-30 13:00 Local Time". At the bottom, there are two buttons: "Add" (dark blue) and "Discard" (light grey).

Two New Options for Package Store Packages Are Available RMSC-1727

It is now possible to enable the patching of applications using Package Store packages using two new options that have been introduced with this release:

- **Prevent downgrade:** ensures that the installation on the target device will be prevented if a higher version of the application is already installed on the target device.
- **Install this package only if another version of this product is already installed:** ensures that the installation on the target device will be prevented if no previous version of the applications is installed.

These two options can be used in combination to use UEM and Package Store functions as a patching mechanism even if the original deployments are handled by an external system (for example Microsoft Intune).



Options dialogue and Advanced dialogue with the new options

Other Improvements and Changes

- Improved performance of data normalization and enrichment (RayVentory Catalog). [RMSC-1517](#)
- When a new inventory is received, the reconciliation engine ensures it is rejected if a newer version of the inventory is already available. [RMSC-1838](#)
- When downloading the macOS agent if the backend is configured with HTTPS, the certificate gets downloaded automatically and integrated into the installation sources. During the installation of the agent, the certificate will get installed to the internal store. [RMSC-1786](#)
[RMSC-1788](#)
- It is now possible to view packaging options for imported Package Store packages. Previously, these settings were only visible when creating the package. [RMSC-1920](#)
- A new scheduling event option "don't rerun option" has been implemented. This option enables for the event to be configured to delay the next run for a certain amount of time once it was successfully executed. This way a short repeat time in combination with a high delay for the next run can be configured to make sure that clients with a short on-time are covered. [RMSC-1812](#)
- The device information has been extended by the serial number. It is gathered during the inventory import. [RMSC-1714](#)
- New functions have been added to the automation tool.
 - It is now possible to automatically remove a device or package assignment from a group. [RMSC-1703](#)
 - It is now possible to automatically delete a device or group. [RMSC-1890](#)
- A Folder and upload file support has been added for macOS packages which is similar to the folder and upload file supported for windows packages. [RMSC-1796](#)
- The logging on macOS agent components has been improved. [RMSC-1690](#) [RMSC-1836](#)
- It is now possible to simultaneously assign multiple devices to a single group. [RMSC-1289](#)
- The install state indicator has been improved. In case of overlapping assignments, depending on priority and lifetime specification, the most highly prioritized assignment is identified and used to determine the deployment state value. [RMSC-1356](#) [RMSC-1877](#) [RMSC-1846](#)
[RMSC-1813](#)
- It is now possible to filter the raw data in the **device details** view of a macOS device to only display the data within `/Applications`. [RMSC-1841](#)
- The RMS UEM AppCenter documentation for the Windows and the macOS agent has been improved. The documentation can be accessed from within the RMS UEM AppCenter to gain general knowledge about the RMS UEM AppCenter and the functionalities it offers. [RMSC-1917](#) [RMSC-1911](#)

Resolved Issues

The following issues have been resolved in RayManageSoft Unified Endpoint Manager 3.0.

- Fixed an issue where the version of the agent was not correctly identified during the inventory import from a macOS device. [RMSC-1718](#)
- Fixed an issue where the operating system for macOS devices was not displayed correctly. [RMSC-1840](#)
- Fixed various minor text and localization issues on tooltips, warnings, and error messages. [RMSC-1918](#)
- Fixed an issue where Package Store packages were incorrectly uploaded to the Azure Storage. [RMSC-1967](#)
- Fixed an issue where some files could be missing when creating third party installer (.exe) packages. [RMSC-1973](#) [RMSC-1980](#)
- Fixed the uninstallation and installation operation order in "Apply Policy" on the macOS agent. [RMSC-1986](#)
- Certain application installations on the macOS failed due to missing permissions. For these the installation can now be performed using the `osascript` installation of the package with the default string. [RMSC-1975](#)

Migrating from Previous Versions

In order to migrate RayManageSoft Unified Endpoint Manager from a previous version, follow the installation instructions described in the *RayManageSoft Unified Endpoint Manager Installation Guide*

**Be aware:**

Ensure to create a backup of your database before starting with the upgrade process!

Integrations

When migrating from RayManageSoft Unified Endpoint Manager 2.3 or older, it will be necessary to recreate all previously configured integrations as the settings for the integrations have been changed.

Known Issues

The following list, represents the known issues at the time of the first release of this version of RayManageSoft Unified Endpoint Manager. For a complete list of known issues in RayManageSoft Unified Endpoint Manager refer to the [Raynet Knowledge Base](#). If there are any known issues, the respective information can be found there and will be kept up-to-date.

- **Packaging of a package sometimes fails due to a MinIO connection issue**
Sometimes, due to connection problems a change could not be uploaded to MinIO and therefore the packaging will fail. If this is the case, redo the change. In most cases, the next upload will work directly. [RMSC-1098](#)
- **Duplicated device settings and schedules**
When changing the defaults in the tenant settings, device settings and schedules will be duplicated. The duplicates need to be removed manually. [RMSC-1246](#)
- **No feedback when tabs contain validation errors that prevent saving**
When editing a package and inserting invalid information into a field that will be validated, there is no information that there are errors in the tab. Clicking on the **Save** button will result in no reaction. [RMSC-1344](#)
- **Error message for circular dependencies is missing**
When creating a circular dependency between packages by adding a dependency, only a generic error is given. It does not provide proper information towards the problem. [RMSC-1351](#)
- **Drag & Drop issue in the applications tree view**
When dropping an item between two packages, the item gets moved to the root folder. Dropping needs to be restricted to folder items only. [RMSC-1898](#)
- **Adding an unmanaged dependency for a packages**
When adding an unmanaged dependency for a package an error that the given product code is not correctly read when supplying a reference package might occur. [RMSC-1987](#)
- **macOS AppCenter auto-refresh**
The installation and uninstallation of available packages that have been started by the user are also not refreshed automatically. The list only gets updated after switching between the tabs. [RMSC-1994](#)



Additional Information

Visit www.raynet.de for further information on RayManageSoft Unified Endpoint Manager and take a look at the additional resources available at the Knowledge Base: <http://raynetgmbh.zendesk.com/>.

Raynet is looking forward to receiving feedback from your RayManageSoft Unified Endpoint Manager experience. Please contact your Raynet service partner or use the [Raynet Support Panel](#) to add your ideas or requirements to the RayManageSoft Unified Endpoint Manager development roadmap!





Why Raynet

As a global software vendor with market-leading solutions and complementary managed services, we make successful end-to-end management of IT projects and operations possible.

Following the mission “**Discover to Manage**”, our vision is that all companies worldwide achieve transparency and security as well as optimization of their IT investments by using our technologies..

Get in touch

For more information, call our sales team at **+49 5251/54009-0** or write to **sales@raynet.de**.

