



RAYVENTORY®

The most comprehensive
Solution for Discovery and
Inventory of Software
and Hardware

**Release Notes RayVentry
Portal
11.2**



**Copyright © Raynet GmbH (Germany, Paderborn HRB 3524). All rights reserved.
Complete or partial reproduction, adaptation, or translation without prior written permission is prohibited.**

Release Notes RayVentory Portal

Raynet and RayFlow are trademarks or registered trademarks of Raynet GmbH protected by patents in European Union, USA and Australia, other patents pending. Other company names and product names are trademarks of their respective owners and are used to their credit.

The content of this document is furnished for informational use only, is subject to change without notice, and should not be construed as a commitment by Raynet GmbH. Raynet GmbH assumes no responsibility or liability for any errors or inaccuracies that may appear in this document. All names and data used in examples are fictitious unless otherwise noted.

Any type of software or data file can be packaged for software management using packaging tools from Raynet or those publicly purchasable in the market. The resulting package is referred to as a Raynet package. Copyright for any third party software and/or data described in a Raynet package remains the property of the relevant software vendor and/or developer. Raynet GmbH does not accept any liability arising from the distribution and/or use of third party software and/or data described in Raynet packages. Please refer to your Raynet license agreement for complete warranty and liability information.

Raynet GmbH Germany
See our website for locations.

www.raynet.de

Table of Contents

| | |
|-------------------------------------|----|
| Introduction | 4 |
| What's New? | 5 |
| Resolved Issues | 9 |
| Known Issues | 11 |
| System Requirements | 12 |
| Hardware Requirements | 12 |
| Prerequisite Software | 12 |
| Additional Information | 16 |

Introduction

RayVentory Portal provides a complete set of products for operating system (OS) inventory, as well as Oracle database, VMware vSphere / ESX, and SNMP inventory. The software includes components which perform:

- Discovery and import of devices and services,
- Agent based and agentless (remote execution, zero-touch) inventory,
- Interfaces for communication between clients and RayManageSoft / RayVentory Distribution and Administration Servers,
- PowerShell automation library to automate daily tasks,
- Task scheduler service to trigger inventories and other operations at specified intervals.

Simplified deployment, flexible configuration, and handful of different inventory methods wrapped in the user friendly interface of RayVentory Portal to provide flexibility for network administrators and IT managers with minimal impact on the existing infrastructure.

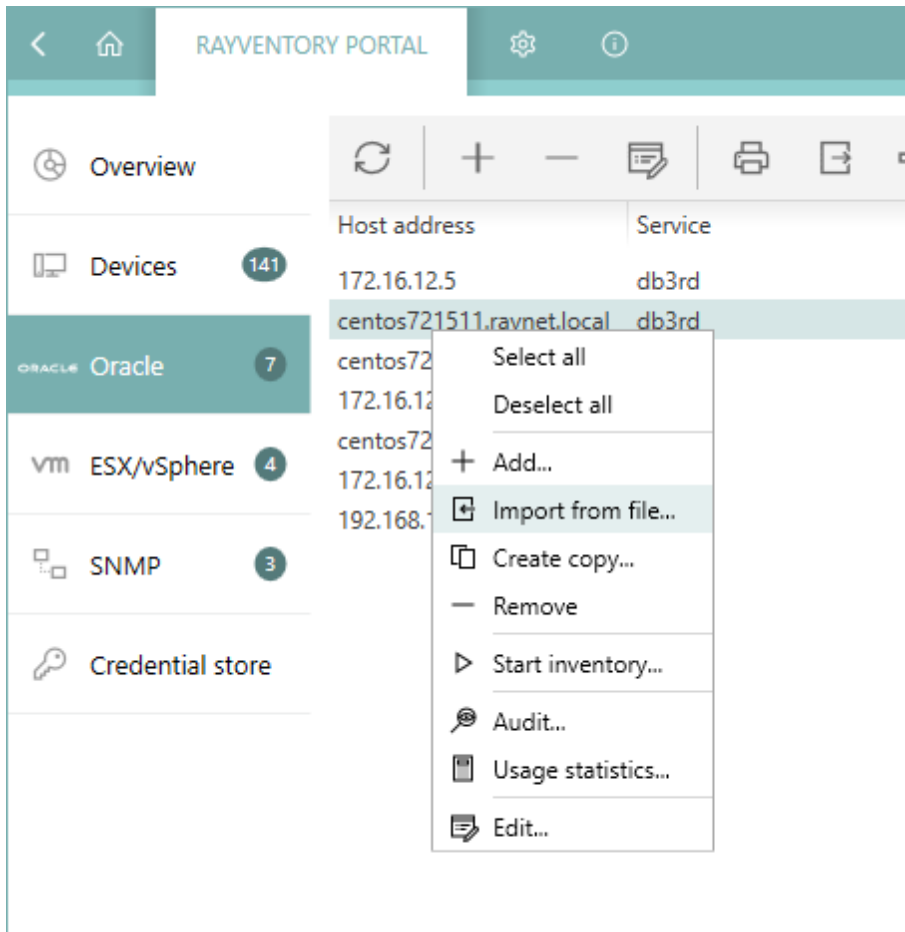
This new release 11.2 is a major upgrade to the previous release, which contains several major product improvements, new features, and resolved issues.

What's New?

Feature Highlights

Import tnsnames.ora Files RVP-176

This version has a new feature present in the **Oracle** screen. Within a click in the context menu, the user is able to simply import connections from **tnsnames.ora**. This routine bears similarities to the CSV importer, which is available for computer connections and which can be found in the **Devices** tab.



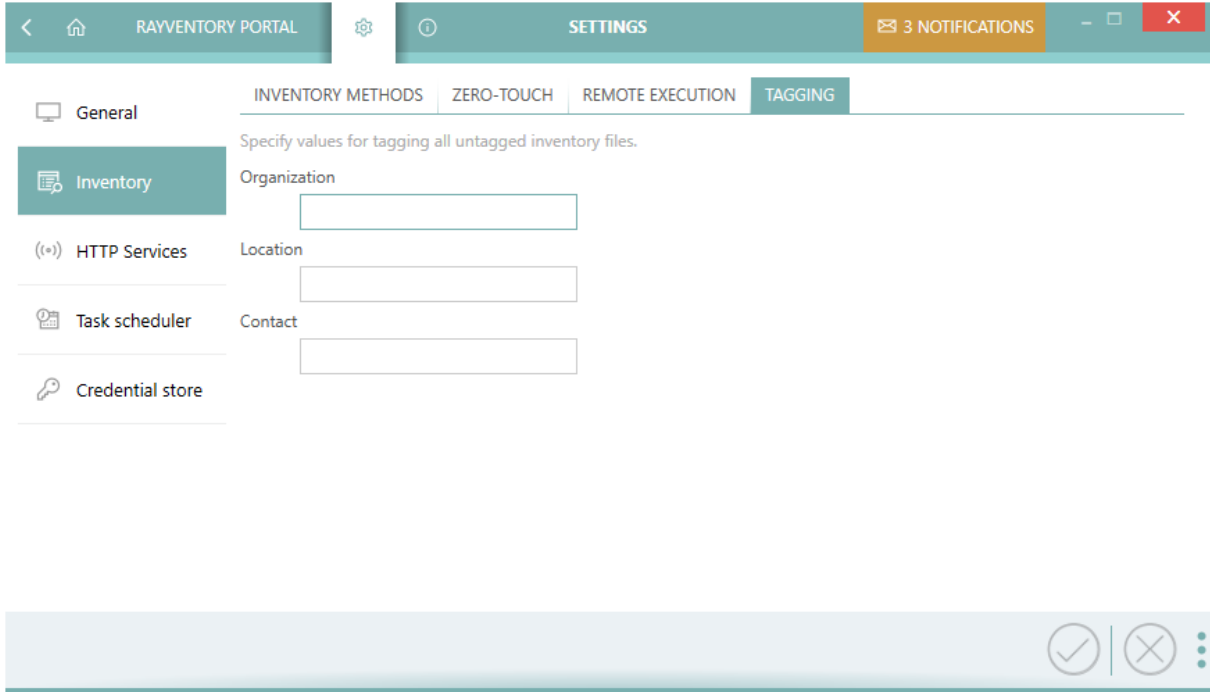
New context menu option to import names from tnsnames.ora

Plugin Support for Remote Execution on Windows RVP-125

Support for **Remote Execution** plugins for the Windows platform has been added to the `ndtrack.exe`. Simply put the plugins into the `Plugins/` folder and they are going to be automatically respected by the execution engine, regardless of the selected **RE** method.

NDI Tagging RVP-128

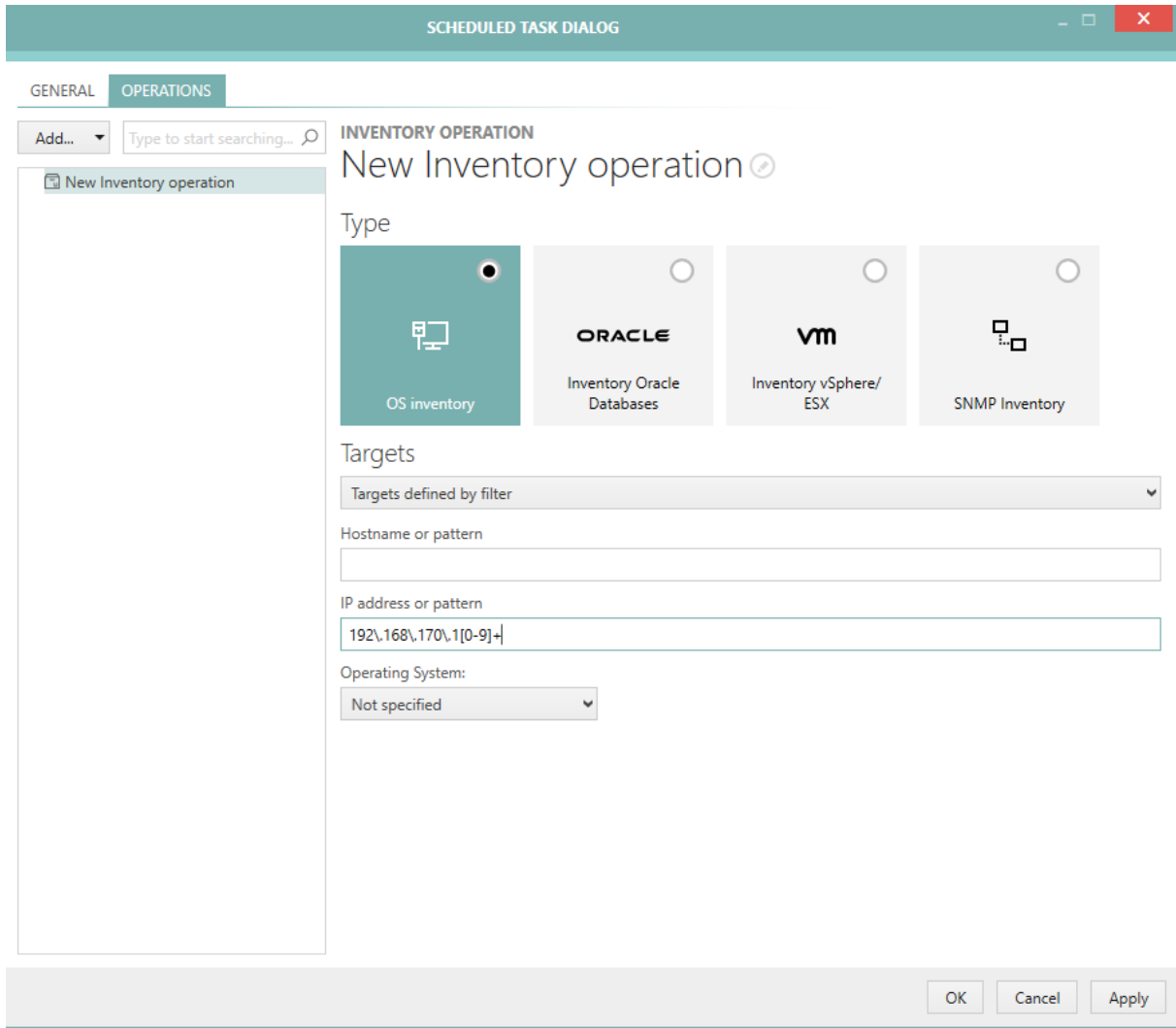
This build has a new feature, which injects specific meta-data to any incoming or outgoing NDI file. It is possible to configure the data that is written to each file globally in the RayVentory Portal **Settings**. Any details coming from lower instances (for example other Portals) are preserved to keep the information about the origin.



The Settings of the NDI Tagging feature

Ability to Filter Devices Affected by Scheduled Inventory Tasks Based on Their IP Addresses RVP-195

This version of RayVentory Portal introduces a more granular control over the scope of inventory tasks. When configuring a scheduled task for the inventory job the user is able to specify the IP address or the Regular Expression pattern for an IP address, so that only specific devices / IP address ranges can be white-listed for a scheduled scan.



Configuratioin of a device filter for a scheduled inventory task

Other New Features and Improvements

- RVP-20 The verbose log statements for the **Zero-Touch Windows Scan** has been changed to be of `INFO` level instead of `DEBUG` level.
- RVP-22 Oracle scans can now reuse the existing connection information to pull the correct SSH credentials.
- RVP-36 Extra scrollbars have been added in several places to show content controls that exceed the available space.
- RVP-40 The grids and the way they work on lower resolutions have been improved. If there is not enough space to show all buttons, an ellipses button which reveals the clipped content when clicked has been added.
- RVP-43 The stability of the HTTP Upload Location when triggering inventory methods that upload to an HTTP server has been improved.
- RVP-122 The way the encryption key for credential values in the `config.xml` file is stored has been changed. The value is now encrypted.
- RVP-135 A grouping function has been added to the **Scheduled Task Editor**.
- RVP-136 Extra checks for the correctness of paths and extensions for the RIW and RIU logging paths have been added. In case of an invalid or missing directory, a warning is shown to the user.
- RVP-140 The **Edit** dialog can now be opened by double-clicking an item in the **Credentials** view.
- RVP-142 An extension filter to filter out non-CSV files from the CSV Import Dialog has been added.
- RVP-155 Multi-selection support has been added to the **Credentials** screen and the **Scheduled Tasks** screen.
- RVP-168 The date and time formats in the log files have been unified.
- RVP-192 The exception and the edge cases handling for computer inventory tasks via PowerShell CLI has been improved.
- RVP-197 Some examples have been added to the description of the IP address range input field in the editor for the scheduled discovery operations.

Resolved Issues

The following is the list of issues that have been resolved in RayVentory Portal in 11.2.

- **RVP-1** The column **Type** was unnecessarily shown for non-computer connections.
- **RVP-6** The order of the months selection in the **Scheduled Task** editor was incorrect.
- **RVP-8** The name of the column for LKast Inventory Files had no spaces in it.
- **RVP-12** In case of a failed authentication for the **Remote Execution** methods for UNIX, the error message incorrectly stated that the Windows credentials had been rejected.
- **RVP-15** The **Inventory** viewer was not showing LPP packages in the **SOFTWARE** tab for AIX inventories.
- **RVP-18** The **Remote Execution** inventory via a copy of `ndtrack.sh` was returning files with an improper prefix.
- **RVP-23** The UNIX inventory (Zero-Touch and Remote Execution by a copied `ndtrack.sh`) was failing if the first credentials that were tried were rejected by the target system.
- **RVP-26** When executing DBFUS script, the local path was used instead of a path provided by the remote execution facility.
- **RVP-29** When refreshing the list of connections the numbers on the panel were not updated.
- **RVP-31** It was possible to put invalid values into the time intervals for daily and monthly recurring tasks.
- **RVP-34** When jumping to the home screen, the main **Devices** tile was randomly grayed out until the first mouse click.
- **RVP-45** Sometimes the credentials in the SNMP scanner were reset unintentionally in case of a no-match.
- **RVP-46** The timer in the **Scheduled Task Edit** dialog was reset to `00:00` by mouse wheel movements.
- **RVP-51** The number figures in the Health table were sometimes wrongly calculated.
- **RVP-58** RayVentory Portal tried to initiate the upload of inventory files even if a combined discovery / inventory job did not deliver any new files.
- **RVP-61** The names for the host name and the IP address were inconsistent across dialogs in the **SNMP** view.
- **RVP-63** The names for the host name and the IP address were inconsistent across dialogs in the **Oracle** view.
- **RVP-72** RayVentory Portal was crashing when trying to open a RAW XML inventory file when no default app was configured in Windows.
- **RVP-73** The column capabilities were not recognizing the context resulting in showing computer-specific methods for non-computer connections.
- **RVP-74** In the **Add Credentials** wizard there were no vertical scrollbars for clipped content.
- **RVP-76** The names for the **Webservice URL** were inconsistent across dialogs (it was sometimes referred to as **Webservice Server URL** and sometimes as **URL** only) in the **vSphere** view.
- **RVP-80** On some configurations the column **Type** was too small and not resizable.

- **RVP-82** For non-computer connections without inventory files the error message incorrectly said "This machine has not been inventoried yet".
- **RVP-86** For some unsupported content, the **NDI Inventory Viewer** was showing no relevant information.
- **RVP-87** The Inventory wizard was always showing the textbox for errors and messages even if the scan was successful.
- **RVP-91** It was possible to click the **Show inventory** button from the context menu when multiple items were selected.
- **RVP-101** When canceling the discovery, the devices that had been added by the session were not removed.
- **RVP-105** The **Dirty** flag for the **computer connection** editor was not working fine after changing the type, the host name, and / or the IP address followed by clicking the **Apply** button.
- **RVP-110** During the **Windows Zero-Touch** scan the current user credentials were not used for devices without assigned or matching credentials which might have resulted in long timeouts.
- **RVP-112** There were some situations in which the **Oracle Discovery** would not probe and discover all databases.
- **RVP-113** It was possible to cycle through all of the credentials (even those from incompatible types) with the arrow keys in the credential picker comboboxes
- **RVP-114** Broadcast addresses were not excluded from the discovery scan.
- **RVP-116** The list of devices was not being refreshed after a scheduled import.
- **RVP-117** The indication of the connection duplicate in the connection editor was unreliable.
- **RVP-118** After editing a device, sometimes the information about the status of the NDI upload for that device could be lost.
- **RVP-119** The Oracle inventory could remove the previous inventory results upon the start. This resulted in a loss of data in case the scan did not deliver any new results.
- **RVP-138** Private authentication key was shown in the sidebar of the credentials screen.
- **RVP-143** It was possible to create unintended duplicates of connections by cloning one of them and changing the name back to the original.
- **RVP-144** The generic message "Select at least one device to get access to details" was not relevant for non-computer entries in the **Oracle**, the **SNMP**, and the **vSphere** sidebar.
- **RVP-149** The search box in the Inventory Details Explorer for the Server Features tab was styled incorrectly.
- **RVP-156** When performing a combined Discovery and Inventory of an Oracle instance, the view had a confusing status, claiming that no inventory had been started.
- **RVP-164** An error "DEV_ISS: Failed. Details: ok" was shown in some scenarios when executing **Oracle** inventory.
- **RVP-175** The icon for UNIX devices was incorrectly shown in the **Device connection** editor.
- **RVP-183** The test in the **Discovery** wizard on the **Services** page did not utilize line wrapping.
- **RVP-191** The **SNMP Inventory** wizard was showing empty values for connections that had only the IP address defined.

Known Issues

For a list known issues in RayVentory Portal refer to the Raynet [Knowledge Base](#). If there are any known issues, the respective information can be found here and will be kept up-to-date.

System Requirements

Hardware Requirements

This section lists the minimal hardware requirements for devices running RayVentory Portal.

Minimal

- Screen resolution: 1024 x 768 pixels
- Color settings: 16 bit
- RAM: 2GB
- Disk space: 100MB

Recommended

- Screen resolution: 1280 x 1024 pixels
- Color settings: 32 bit
- RAM: 4GB or higher
- Disk space: 1GB or more

**Note:**

The installation of the RayVentory Portal framework itself requires about 400MB of disk space. The amount of additional space needed depends on the size and number of incoming inventory results.

Prerequisite Software

General Prerequisites

The following operating systems are supported for the installation and running of RayVentory Portal at the time of release.

- Windows Vista
- Windows 7
- Windows 8
- Windows 8.1

- Windows 10
- Windows Server 2008 SP1-SP2
- Windows Server 2008 R2
- Windows Server 2012
- Windows Server 2012 R2
- Windows Server 2016

Required Software

- .NET Framework 4.5.2

Operating System Inventory

The following systems are supported:

- Windows 2016 Server
- Windows 2012 R2 Server
- Windows 2012 Server
- Windows 2008 R2 Server Core
- Windows 2008 R2 Server
- Windows 2008 Server Core
- Windows 2008 Server
- Windows 2008 Server Core x64
- Windows 2008 Server x64
- Windows 10
- Windows 10 x64
- Windows 8.1
- Windows 8.1 x64
- Windows 8
- Windows 8 x64
- Windows 7
- Windows 7 x64
- Windows Vista
- Windows Vista x64
- RedHat Linux 8 and 9
- RedHat Enterprise Linux 3, 4, 5, 6, 6.1

- SuSE Professional/OpenSuSE 9, 10, 11
- SuSE Enterprise Server (SLES) 9, 10, 11
- Mac OS X 10.8, 10.9, 10.10
- Windows XP
- Windows XP x64
- Windows 2003 R2 Server
- Windows 2003 R2 Server x64
- Windows 2003 Server
- Windows 2003 Server x64
- Solaris 9, 10, 11 (Intel)
- Solaris 8, 9, 10, 11 (SPARC)
- CentOS 6.x, 7.x
- Fedora 21
- AIX 5.2, 5.3, 6.1, 7.1
- HP-UX 11.00, 11i, 11i v2, 11iv3

Required Software

- Java SE Runtime Environment (build 1.6.0) (Mac OS X agent inventories only)

VMware ESX/ESXi Inventory

The following platforms are supported:

- VMware ESX Server 3.0 and higher
- VMware ESXi Server
- VMware vCenter Server

Oracle Inventory

The following database components are supported:

- Oracle Database 9i
- Oracle Database 10g
- Oracle Database 11g
- Oracle Database 12c

Required Software

- Java Runtime 1.4.2 - Java 10
- Any operating system supporting Oracle JRE

Additional Information

Visit www.raynet.de for further information on RayVentory Portal, and take a look at the additional resources available at the Knowledge Base: <http://knowledgebase.raymanagesoft.com>.

Raynet is looking forward to receiving your feedback from your RayVentory Portal experience. Please contact your Raynet service partner or use our [Support Panel](#) to add your ideas or requirements to the RayVentory Portal development roadmap!

More information on RayVentory can be found in the *Release Notes with Technical Specifications* for RayVentory.

RayVentory Portal is part of the RaySuite

More information online
www.raynet.de



Raynet GmbH

Technologiapark 20
33100 Paderborn, Germany
T +49 5251 54009-0
F +49 5251 54009-29
info@raynet.de

www.raynet.de